



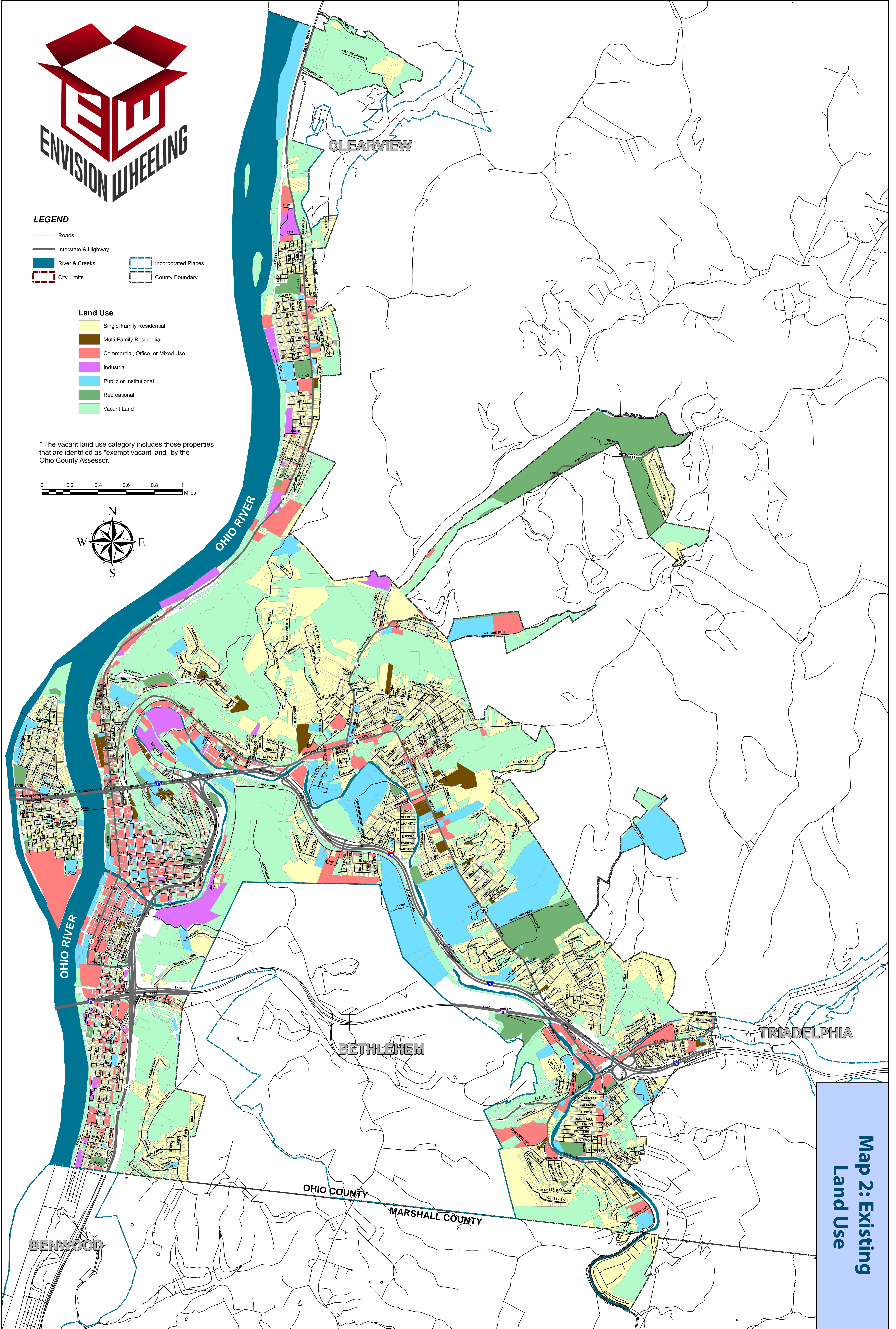
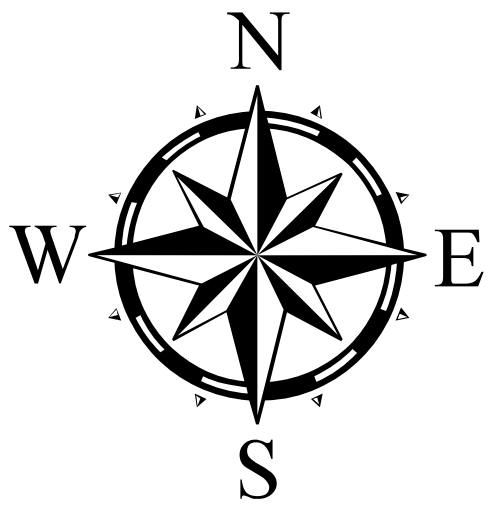
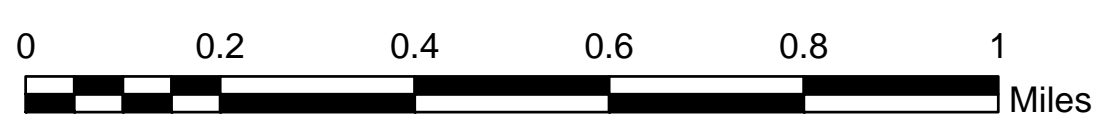
**LEGEND**

- Roads
- Interstate & Highway
- River & Creeks
- City Limits
- Incorporated Places
- County Boundary

**Land Use**

- Single-Family Residential
- Multi-Family Residential
- Commercial, Office, or Mixed Use
- Industrial
- Public or Institutional
- Recreational
- Vacant Land

\* The vacant land use category includes those properties that are identified as "exempt vacant land" by the Ohio County Assessor.



**Map 2: Existing  
Land Use**